

MICROSCOPE FOR MONITOR

TOKii[®]



TOKii-MMS30160

MONITOR SHOWN IS
NOT A PART OF
EQUIPMENT

HDMI microscope is suitable for routine inspection of products on production line in electronics industry, hardware, precision engineering, plastic industry, medical treatment and biomedical.

FEATURES

Video microscope adopts HDMI interface with higher transmission speed. It has higher image definition and transmission speed than VGA interface, also has the function of three-level dynamic adjustment and image storage function.

The image resolution is 1920X1080P and has functions such as image browsing white balance, exposure brightness adjustment, and crosshair.

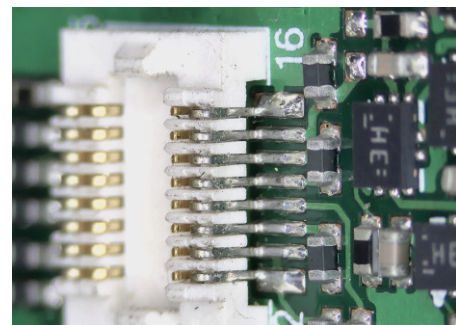
The 1080P high-definition signal can be matched with a minimum of 22 and above monitors with HDMI interface or TV.

A true high-definition image needs to have the following three characteristics.

1. Accurate color reproduction (precise colors make the image more layered, even when watching TV)
2. Ultra-low noise control (it looks clear enough without snowflakes on the TV screen)
3. Balanced exposure control (the light and dark contrast on the image is balanced so that the picture will not be distorted)



Tilt table $\pm 45^\circ$
(OPTIONAL)



product feature may change time to time without notice

SPECIFICATIONS

	Model	TOKii - MMS30160
Standard configuration parameters and the list of accessories 1. Microscope 2. Base 3. Manual 4. Ring light source 5. Power supply 6. Mouse 7. Pendrive	Gain	30-200 times (according to 22 inch monitor) after increasing the objective lens by 2 times, The magnification is 400 times
	View range	3 mm -17 mm
	Working distance	100-180 mm
	Resolution	1920×1080 P
	Camera spec	1/2"CMOS
	Pixels	200 million
	Clarity	1080P
	Output method	HDMI
	Frame rate	30 frame rate/sec
	Camera function	Automatic
	Lifting range	300 mm
	Center working distance	140 mm
	column	Diameter: 25 mm Height 350 mm
	Working size	380*260*25mm
	Working temperature	-10 ~ 50°C
	Weight	4.3 Kg
Input voltage	12V-2A	
Auxiliary lighting device	Ring LED adjustable light source	
7	1. 0.35~0.5~2 times auxiliary objective lens 2. Moving table 3. 2.5D deflection seat 4. LCD monitor OPTIONAL	