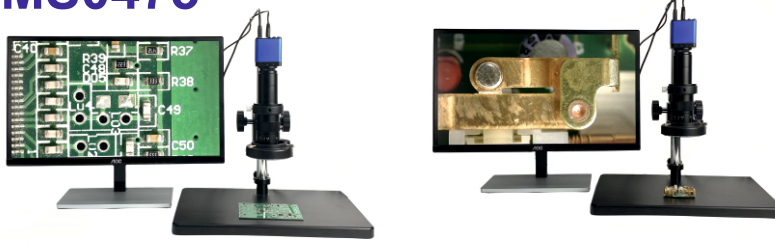


OPTICAL INSPECTION

MICROSCOPE FOR MONITOR TOKii-MMS0475

TOKii[®]



MONITOR SHOWN IS
NOT A PART OF
EQUIPMENT

Economical HDMI microscope is suitable for routine inspection of products on production line in electronics industry, hardware, precision engineering, plastic industry, medical treatment and biomedical.

SPECIFICATION

- Optical zoom range : Objective lens 0.7-4.5 X
- Video zoom range : 21.5 "under display, 30-180 X
- Connection mode : signal, direct connection to display
- Doubling mode : Continuously adjustable
- Pixels : 200 million
- Camera eyepiece : 0.5 X
- Working distance : 90mm
- Lifting adjustment range : 35-300mm
- Hand wheel focus range: Hand rotating up and down lifting, amplitude 0-65mm
- Light source : 60 black LED light sources, continuously adjustable brightness
- Plate size : Aluminum, 380mm*260mm*20mm
- Resolving power : 1920 X 1080
- Chip size : 1/2.5"
- Weight : 4.375kg

ADVANCE FEATURES

- Black and white,
- R B G adjustable,
- Gain
- Brightness,
- Sharpness,
- Half screen contrast
- Monitor: 21.5 "HDMI screen
- Horizontal and vertical flip

- Mirror,
- Noise Removal
- Reflection Weakening
- Saturation Adjustable,
- Frame Rate: 60 fps/ sec
- Input voltage:100-240V
- Automatic / manual white balance

List of standard configuration

- 1 lens
- one set of video microscope base (vertical pole + lifting table + black large base plate);
- one black 60 LED light sources;
- HDMI camera

(display is optional customer or can use their own available min. resolution 1920 X 1080)

product feature may change time to time without notice