

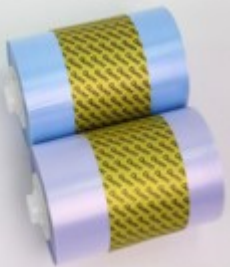
## TOKii-46C

## TOKii<sup>®</sup>



### FEATURE AND SPECIFICATIONS

- Smart shoe lamination Cover
- Voltage 230V±5%
- Power 1300W
- Power on warm-up time ≈120 seconds
- Standby power consumption 75W
- Film output time 2~3 seconds
- Laminating time 2~3 seconds
- Product safety Passed CE certification and
- Consumables environmental safety ROHS certification



1. General Film roll for 550 approx shoes to cover
2. Anti Slip Cover roll to cover approximately 330 shoes