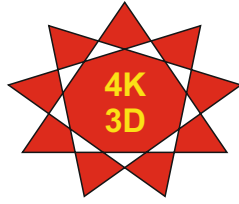


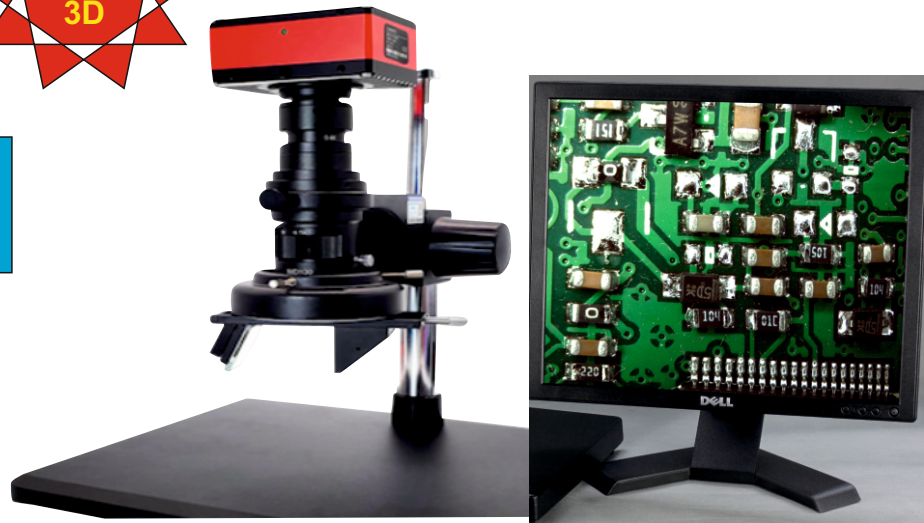
OPTICAL INSPECTION

MICROSCOPE 3D TOKii-43DES



TOKii[®]

MONITOR OPTIONAL &
CUSTOMER BUY
LOCALLY



FEATURES

- HD 4K pixel 3D stereo 3D electron microscope
- 2D view also available.
- Objective lens: 0.7X-5X continuous zoom
- Resolution, HDMI 1920 X 1080P
- Connection mode: HDMI real-time output
- Working height: standard distance 100MM
- Photographic eyepiece: standard 0.4X (optional 1X)
- Field of view: standard 2.5MM-20MM
- Connection device: connected to the monitor
- Measurement accuracy: 0.0001 MM
- Magnification: 25X- 230X (refer to the 22-inch display) can be equipped with a maximum of 460X
- Supports PC connectivity with software.
- Focusing mechanism: manual knob type up and down focus, focus line distance 1MM-50MM
- Base: **Anti-Static**, length 320 X 260MM
- Lighting system: brightness LED machine vision special environmental light source, brightness adjustable
- Using Sony IMX415 chip with 1/2.8-inch image sensor resolution: 3840X2160P@60FPS
- Basic functions: built-in precision measurement, photo, video, U disk storage

product feature may change time to time without notice