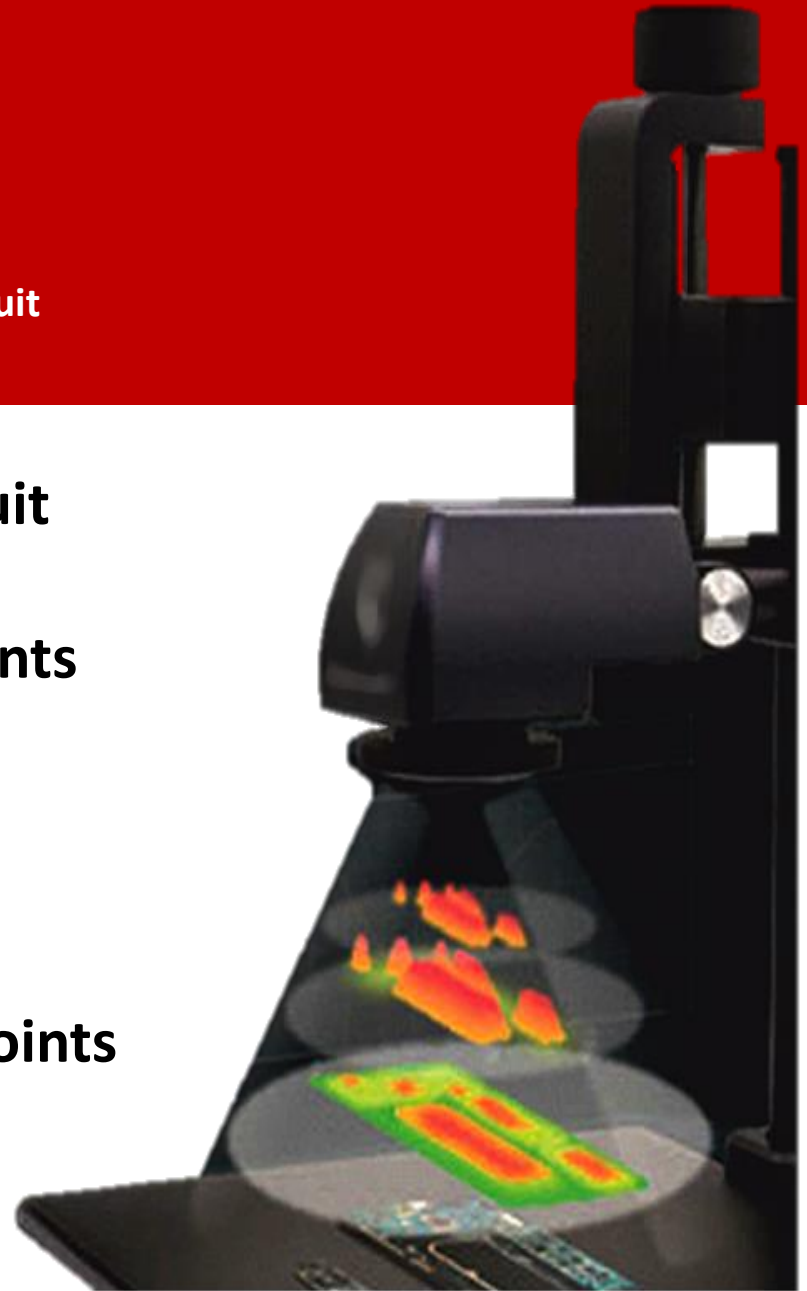
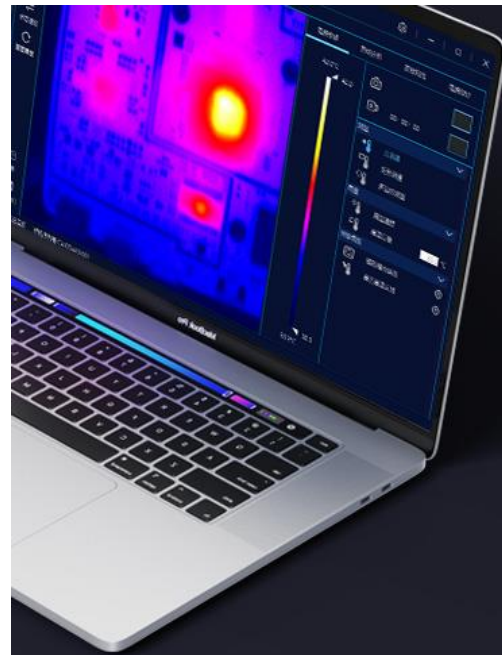


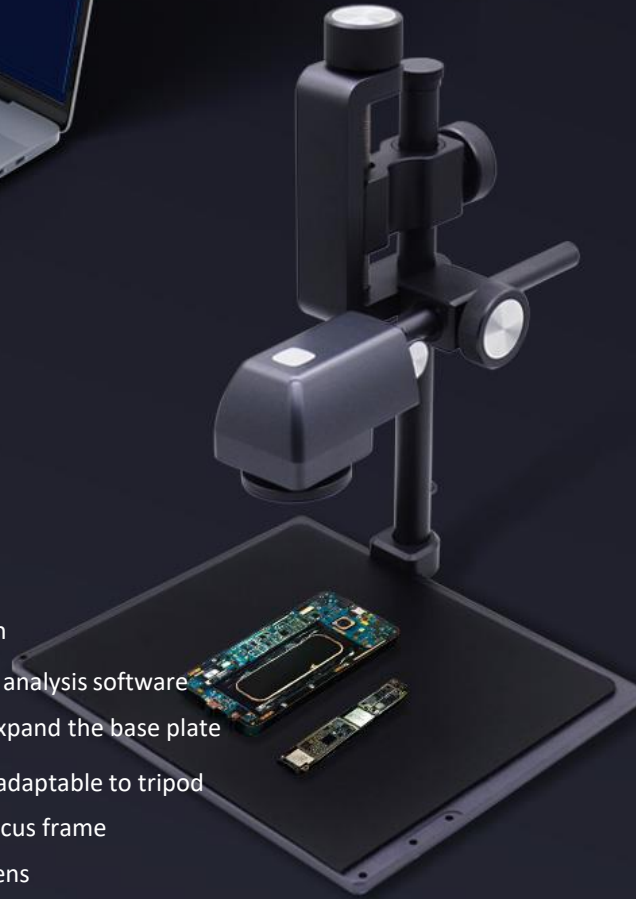
TOKii-10TMS PCB Thermal Analyzer









- Effective for detection of current leakage and short circuit
 - Excellent performance in quality control
-
- Locate current leakage and short circuit
 - Circuit design simulation assistance
 - Macro view of circuit board components
 - 3D thermal field distribution analysis
 - High temperature alarm tracking
 - Regional temperature curve record
 - USB direct connection to computer
 - Full analysis of 52,000 temperature points
 - Fast and stable metal bracket
 - Freely expandable structural design





TOKii-10TMS



-  260*200 HD resolution
-  Exclusive circuit board analysis software
-  Can be combined to expand the base plate
-  Thermal imaging lens adaptable to tripod
-  Support fine-tuning focus frame
-  Adjustable to macro lens
-  Continuously enriched application case library
-  Automatic software update

Product structure

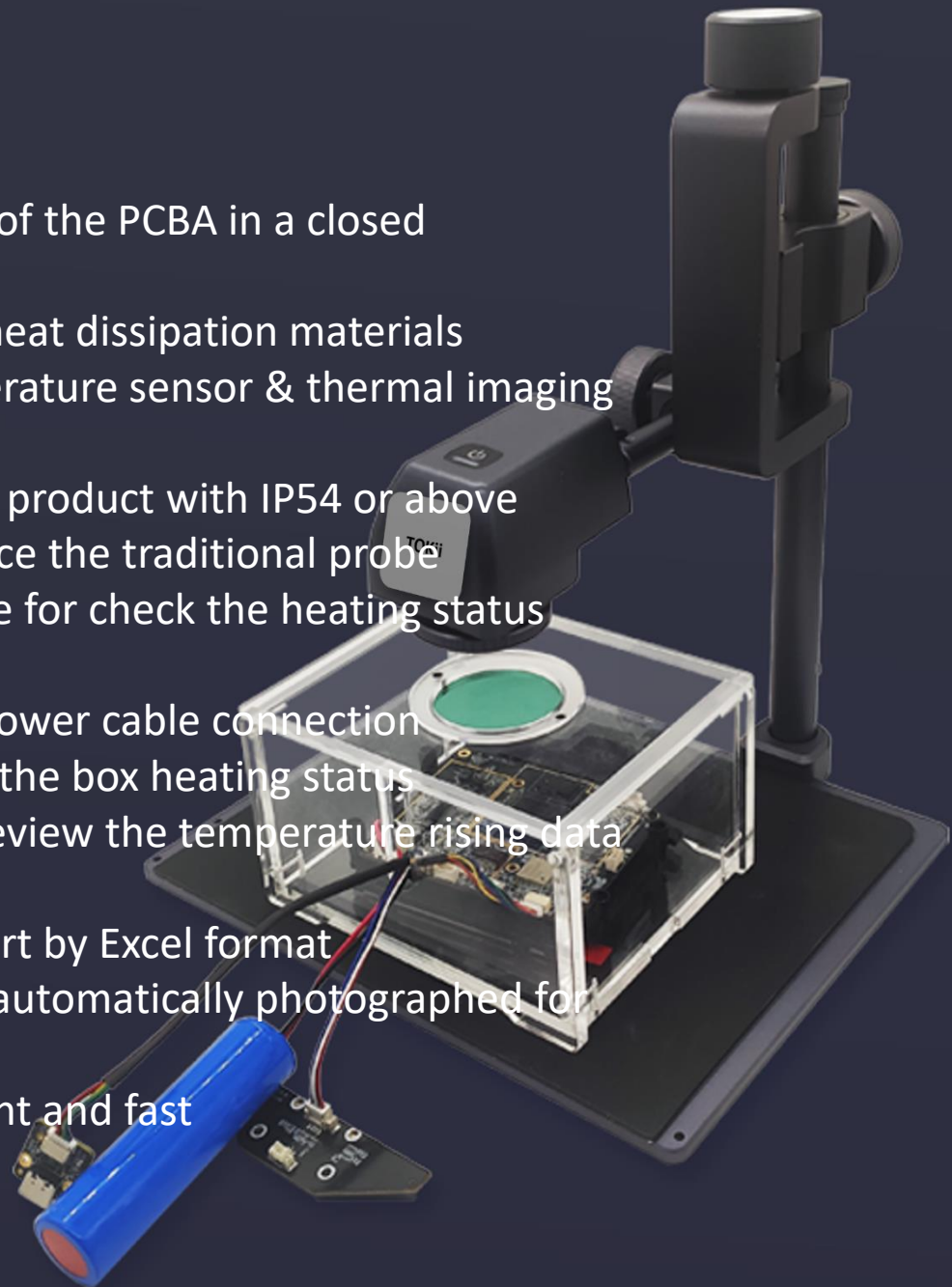
Easy install and operation



PCB Heat Dissipation

Optional experiment box

- Simulate the heating condition of the PCBA in a closed environment
- Verify dissipation effect of the heat dissipation materials
- Combined verification of temperature sensor & thermal imaging temperature measurement
- Evaluate the heat dissipation of product with IP54 or above
- New dissipation design to replace the traditional probe
- Large-aperture observation hole for check the heating status conveniently
- Passing hole is convenient for power cable connection
- The temperature sensor shows the box heating status
- Temperature trend record for review the temperature rising data of long- time work
- Support temperature data export by Excel format
- Over-limit temperature can be automatically photographed for further PCBA analysis
- Fully USB connection, convenient and fast

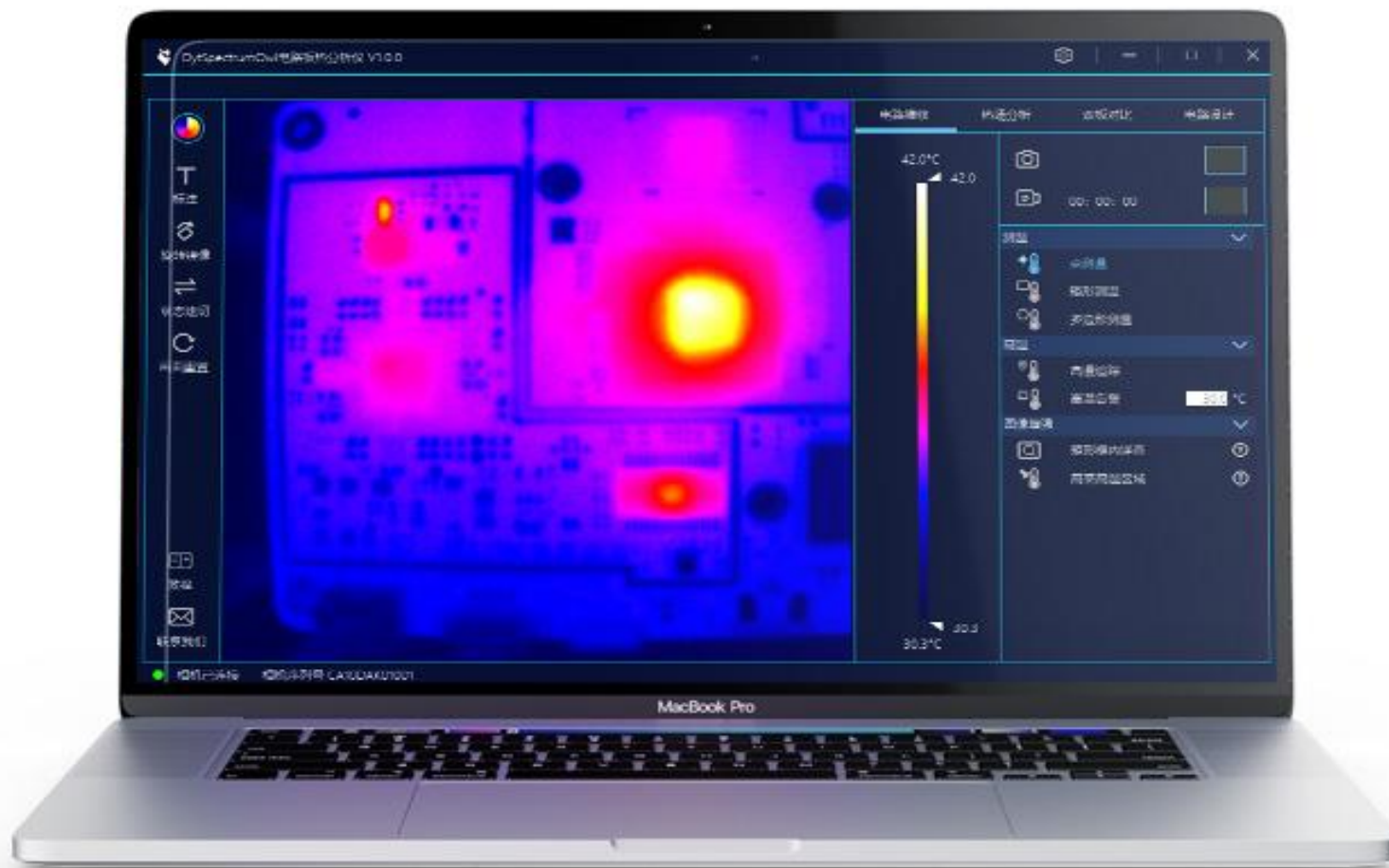




Experiment box

- Adjustable size of wire hole suit for different lines
- 50mm thermal imaging observation window which can observe the whole PCBA
- Acrylic high transmittance shell to ensure airtightness and can check the placement of PCBA.
- USB cable with temperature sensor can plug in and acquire temperature data instantly
- The size of the experiment box is 110mm*90mm*60mm

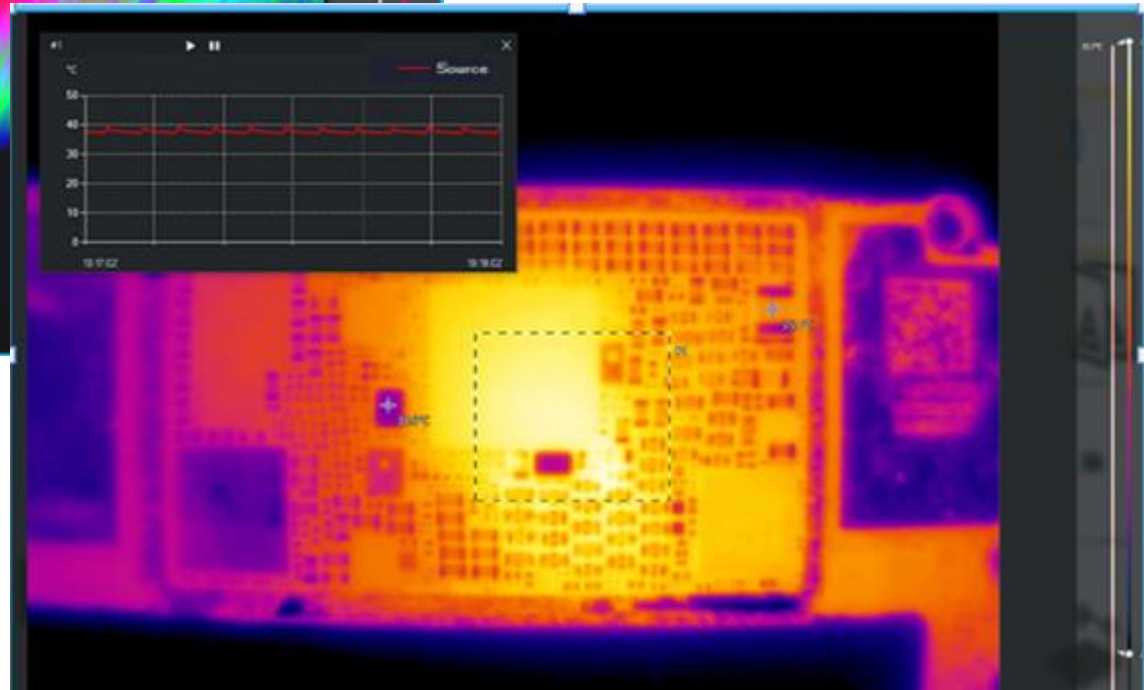
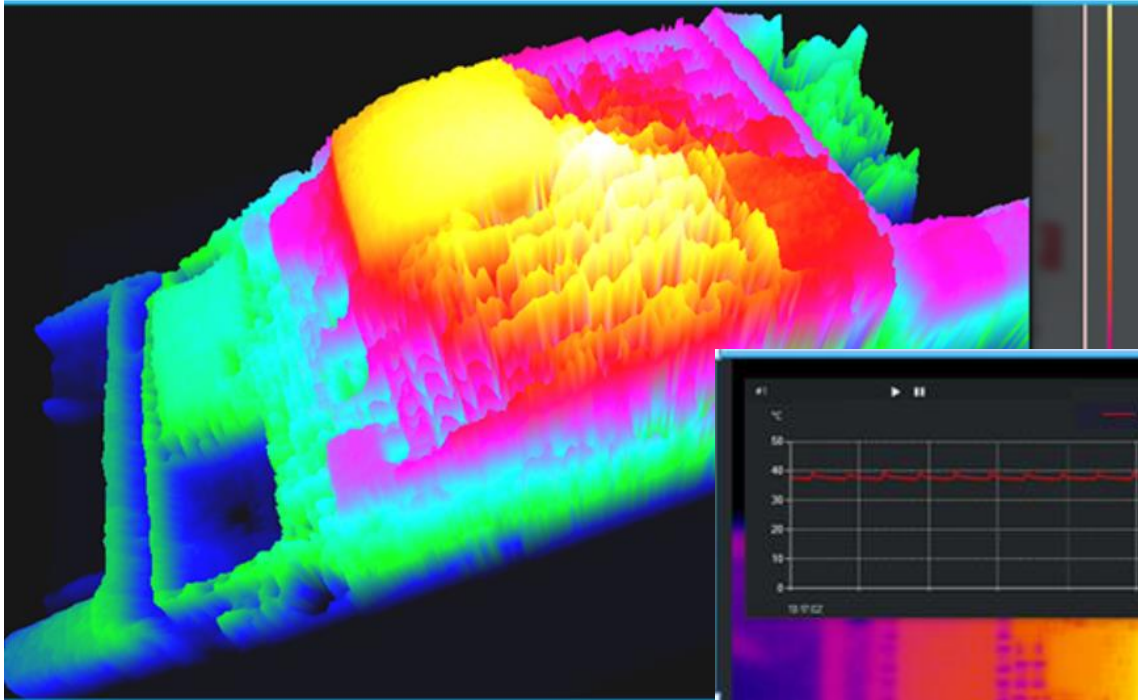
Quickly pinpoint the leakage position of the circuit board



3D/2D thermal field distribution function

Special mode for product evaluation and heat distribution analysis.

Innovative 3D thermal field mode is more intuitive, and curve record of 2D thermal field area is more detailed



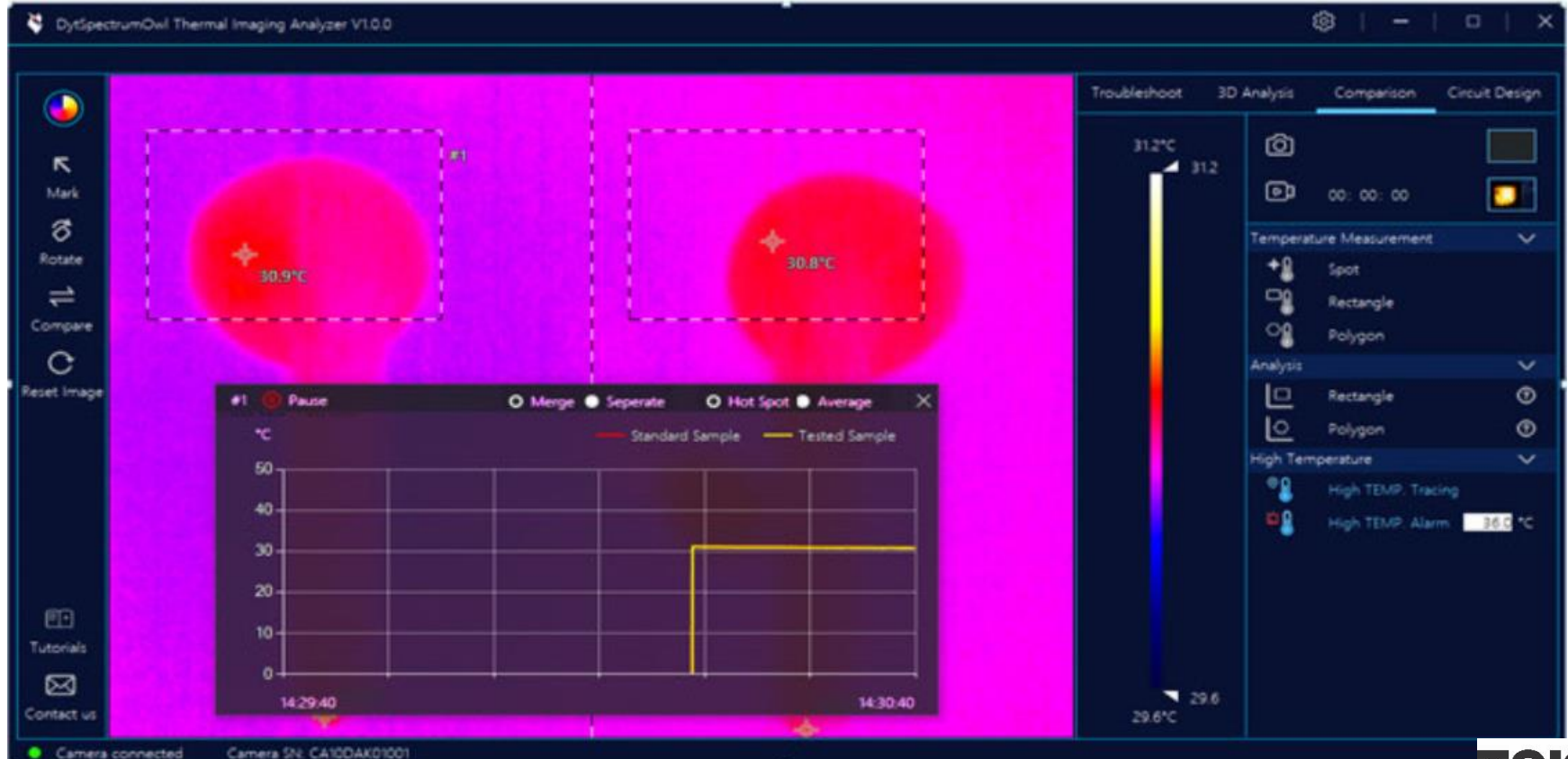
- Rotate 3D, one more spatial dimension analysis
- 2D thermal field mode's curve record, one more time dimension data

Double plate comparison, regional temperature Curve comparison record

Comparison verification for optimization of heat distribution design and fault differentiation

Regional temperature curve comparison record, overlay comparison, etc.

Place the PCB boards to be compared on both sides of the dividing line, and conduct comparative analysis under the same conditions.

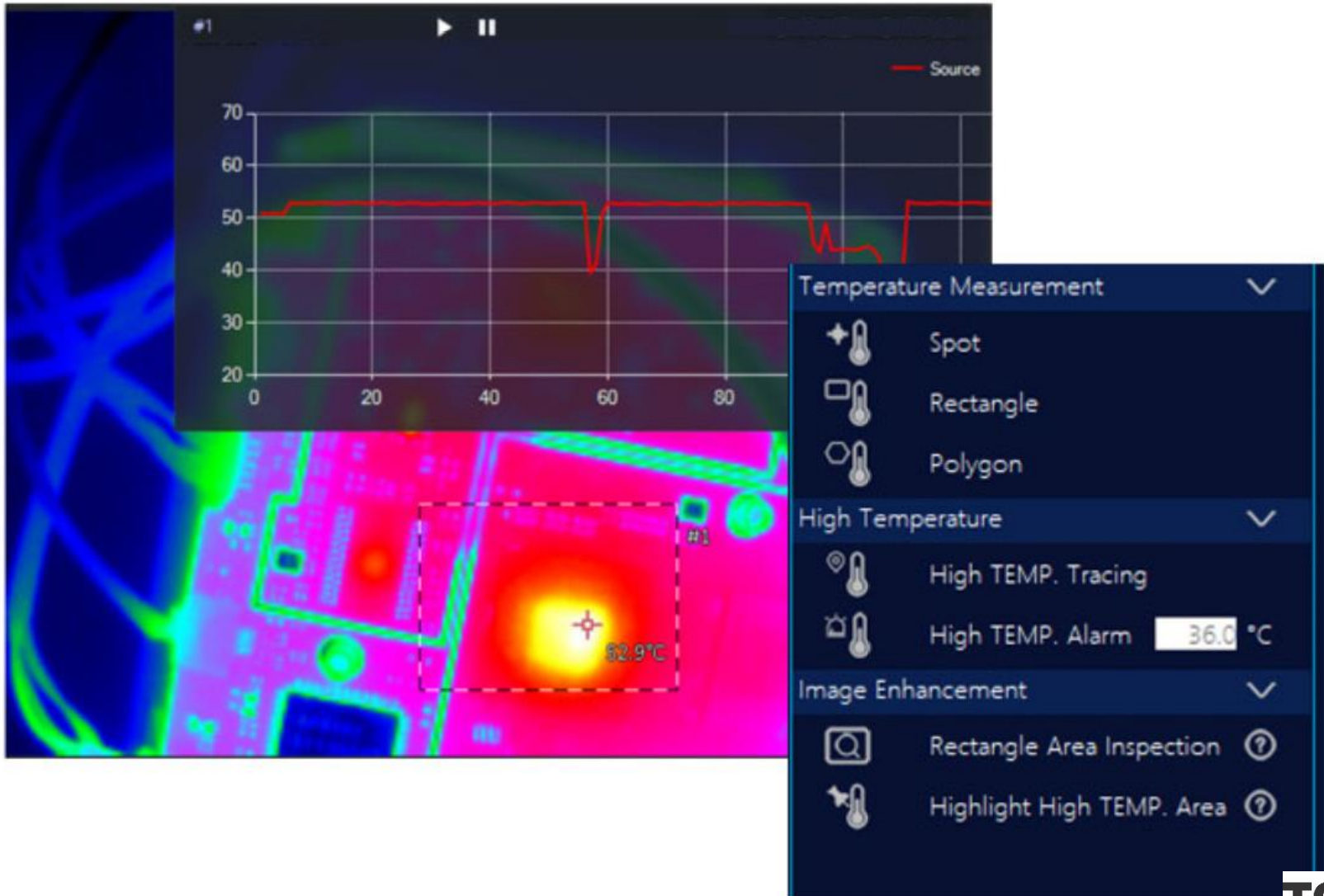


Full screen video recording:

You can easily make your own teaching videos



Can record the temperature curve of the circuit board



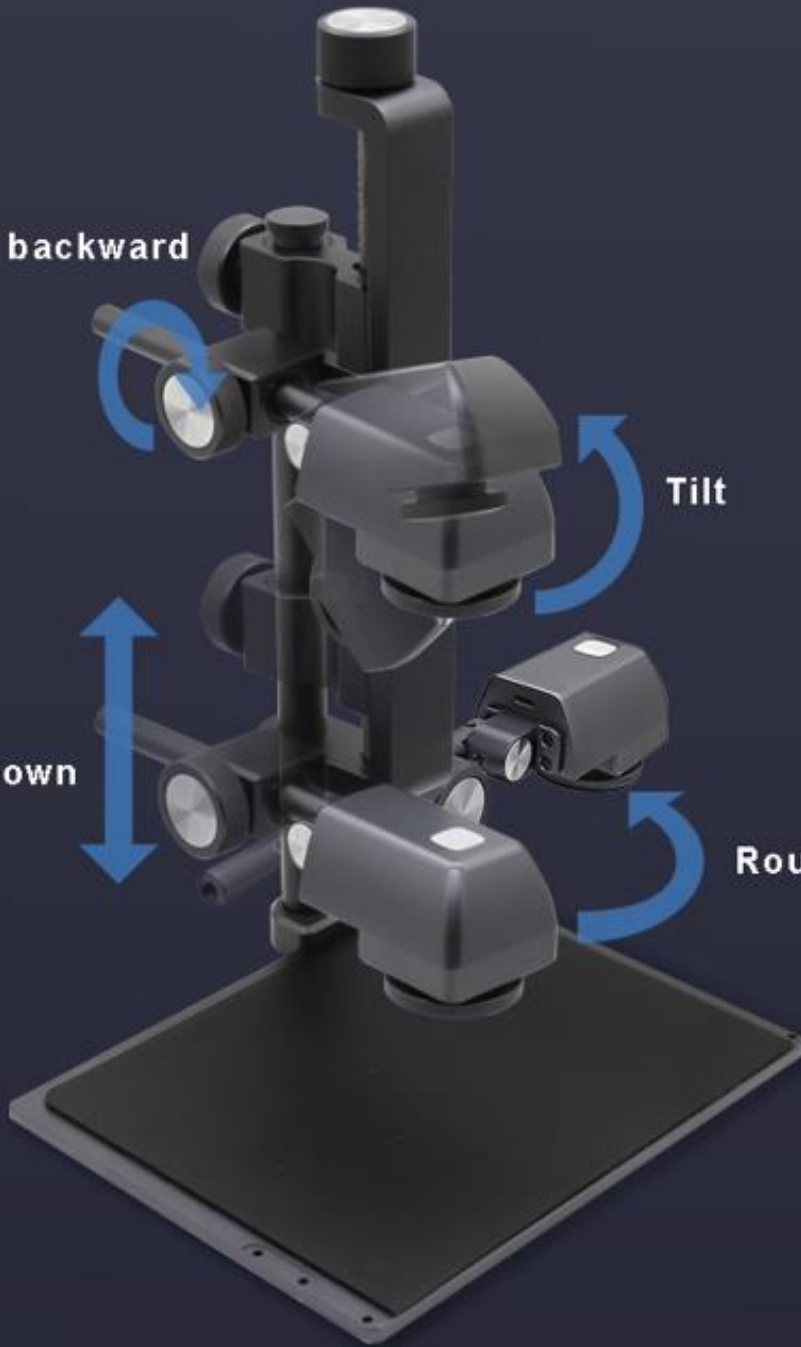
360 degree adjustment

Forward and backward

Tilt

Up and down

Round



Adjustable lens focus

During the test, different thickness of the board will lead the image to be unclear.
The sharpness of the image can be controlled by adjusting the focal length

Adjust the focus of camera to get clear image



TOKii-10TSM reserves 1/4 inch camera threaded holes, which can be installed on any standard camera bracket



Technical specifications

Parameter		Specification
Thermal parameters	camera	
	Thermal imaging resolution	260*200
	Frame	25Hz
	NETD	70mK@25°C
	FOV	34.4 in horizontal, 25.8 in vertical
	Lens	4mm adjustable focus lens
	Temperature range	-10~120°C (14~248F°)
Temperature measurement accuracy	±5°C or ±5%	
Interface	Power	DC 5V(USB Type-C)
	Power on/off	Long press the power button for 1 second to power on, long press 3 seconds to power off.
	Connection method	USB Type C Cable
Dimensions	Dimensions	Standard: 220mm x 172mm x 241mm; Assemble additional accessories: 346mm x 220m x 341mm
	Packing size	Packaging: 376mm x280mm x105mm
	Net weight	Standard: 1.1kg (Options: +0.5kg)
	Working environment	
Minimum software and hardware requirement	Temperature	-10°C~55°C (14F° -131F°)
	Humidity	<95%
	System	Win10 (recommended) win7
CPU & RAM	i3 & 4G	
Update	Manually or automatic update via internet	