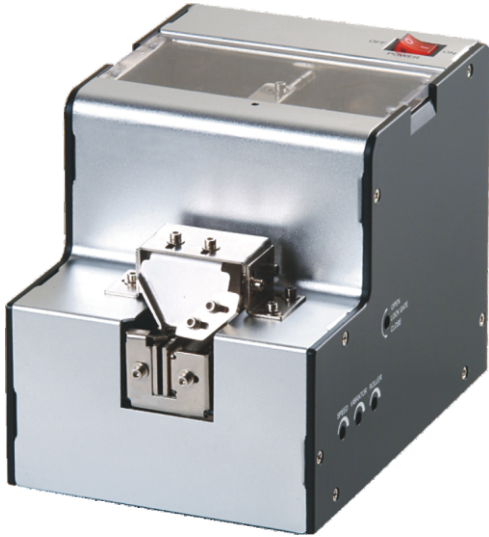


## SCREW FEEDER: TOKii-1050SF



Available for Adjustable Screw  
Size 1.4mm to 5.0mm

- Widest range screw sizes. ( M1.0 to M5.0)
- Max of screw length 19 mm.
- Feeding rial is adjustable.
- Save parts costs and stock.
- Adjustable vibration intensity.

## Specifications

Size	182(W)x126(L)x147(H) mm
Weight	N.W:Appror2.17kgs(excluding switching adaptor)
Power Source	AC 100-240V
Switching Adaptor	DC 15V Switching Adaptor
Applicable Screw	From M1.0 to M5.0
Applicable Screw Length	UP to 19mm (under head)
Scooping Chamber Capacity	200-220cc
Accessories (in package & box)	Allen Wrench ( L SHAPED 2.0x107 mm) x1pc.
	Switching Adaptor x 1 set.
	Accessory( front) (0.8,1.0,1.2,1.5,20x70 mm) x1pc
	Accessory(behind) (0.2x10x20 mm) x2pcs
	(0.5x10x20 mm) x10pcs
	Stopper 2.0-5.0mm x1pc
Package Size	Instruction Manual
	Each Set/Box: 282(L)x142(W)x201(H) mm
	Each Carton: 450(L)x310(W)x435(H) mm
Package Weight (Including Machine)	Each Set/Box G.W.:Approx 2.63 kgs
	Each Carton G.W.:Approx 16.53 kgs (One B)