



IT'S VERY WELL
MADE IN TAIWAN

瑞士航太級馬達介紹

Introduction to Swiss DC motor

- 瑞士原裝低慣量、低衝擊、低鬆動馬達
瑞士專利馬達耗電、衝擊、慣量只有市售馬達1/10。對細小螺絲扭力精準度以及防止螺絲鬆動,特別有效。
- 無碳粉溢出設計馬達適用於3C產業
超薄、超輕多功能,為電子產業設計主流,電子產品均內藏IC設計,而一般市售馬達均有碳粉溢出污染。所以一般有碳粉電動起子無法適用於電子無塵環境。
- Its motor, made and imported from Switzerland, is characterized with low inertia and low impact.
Switzerland patented motor, its power consumption, impact and insert momentum are 1/10 of the conventional motors. Very effective for tightening the fine screws with precise torque and loosening free.
- Its motor does not generate any carbon particle over flow, so its motor is suitable to be used in the 3C industry.
The electronic products will become thinner, lightweight and multifunctional; most electronic products have one or more IC components. Other brands of motors on the market are not suitable to be used in the 3C industry because they generate carbon particles.



Pumps and ventilators

Blood pumps
Axial blowers



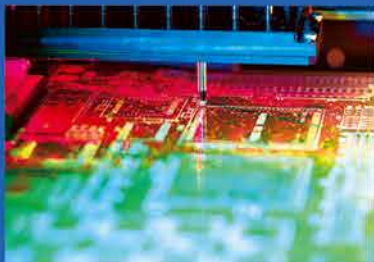
Optics and precision mechanics

Lens adjustment
Levelling equipment
Beamers



Cash and ticket dispenser

labeling machines
credit card readers



Semi-conductor industry / EDP / telecommunications

SMT fitting machines
Feeders



Measuring and control technology

precision scales
measuring devices



Swiss aviation grade motor, low inertia and low impact electric screwdriver / Vacuum pick up electric screwdrivers

低壓直流馬達驅動型 (附電源控制器)

Low voltage DC motor driving (with controller)



可訂製ESD防靜電型

ESD type is available for ordering.



特點 Feature

● 超迷你精準耐用長壽命設計

直徑φ26mm全長158mm世界最小體積，重量只有187g、耗電6W，全機六只傳動軸承，徹底降低機械磨耗，更能提高扭力精準度及降低起子頭搖擺度。

● 終生使用設計，一支抵用他牌數支

三年1000萬次以上終生耐用性設計，瑞士馬達至少可連續運轉2萬小時(約可使用10年以上)。並搭配長壽命設計可達1000萬次白金煞車開關裝置。

● 本產品可適用於無塵室，並通過SGS無塵室CLASS-10等級測試。

● The electric screwdriver is very compact, accurate and durable.

Design not only in the most compact body of diameter 26mm, overall length 158mm and weight 187g but the lowest power consumption 6w in the world. The 6 bearing are inbuilt in the hammer casing to reduce the anvil friction and bit vibration and to improve the output torque precision.

● The electric screwdriver can last through a lifetime; it outlasts several electric screwdrivers of other brand.






The everlasting durability is designed with 10 million times in use in three years (The Switzerland patented motor permits continued operation at least 20,000 hours (about 10 years operation). The service life of the contact point withstands 10 million on and off contacts.

● This product can be used in the clean room. It has passed SGS Clean room Class-10 test.

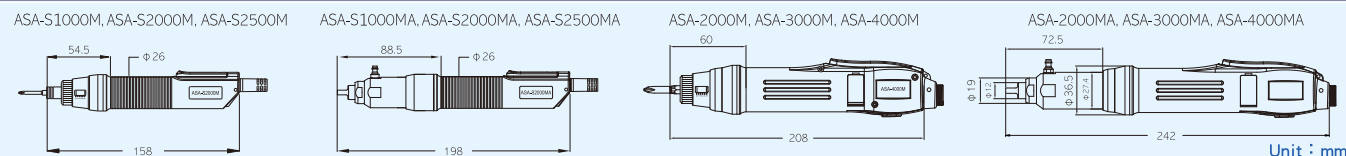
槓桿式 Lever start type · 快速式 High speed type (S) · 氣吸式 Vacuum pick up type (A)

機種名 Model No.	輸出扭力範圍 Torque range	適用電源控制器 Available controller		無載轉速(±10%) No Load Speed (rpm)	適用螺絲 Available screw		
		kgf-cm	lbf-in		機械牙徑 Machine screw φ	自攻牙徑 Tapping screw φ	
ASA-S1000M	ASA-S1000MA	0.15~1.0	0.13 ~ 0.87	APS-201B APS-301B AM-55 AM-65	150-300 350-500 150-250 350-250	1.0 ~ 1.8mm / 0.04 ~ 0.07in	0.6 ~ 1.4mm / 0.02 ~ 0.05in
ASA-S2000M	ASA-S2000MA	0.3 ~ 2.0	0.26 ~ 1.7	APS-301B AM-65	650-1000	1.0 ~ 2.2mm / 0.04 ~ 0.09in	1.0 ~ 2.0mm / 0.04 ~ 0.08in
ASA-S2500M	ASA-S2500MA	0.4 ~ 3.0	0.35 ~ 2.6	APS-301B AM-65	450-700	1.0 ~ 2.6mm / 0.04 ~ 0.10in	1.0 ~ 2.0mm / 0.04 ~ 0.08in
ASA-2000M	ASA-2000MS	0.3 ~ 2.0	0.26 ~ 1.7	APS-301B AM-65	450-700 700-1000	1.0 ~ 2.2mm / 0.04 ~ 0.09in	1.0 ~ 2.0mm / 0.04 ~ 0.08in
ASA-2000MA	ASA-2000MSA	0.3 ~ 2.0	0.26 ~ 1.7	APS-301B AM-65	450-700 700-1000	1.0 ~ 2.2mm / 0.04 ~ 0.09in	1.0 ~ 2.0mm / 0.04 ~ 0.08in
ASA-3000M	ASA-3000MS	0.5 ~ 5.0	0.43 ~ 4.3	APS-301B AM-65	400-600 700-1000	1.0 ~ 2.6mm / 0.04 ~ 0.10in	1.0 ~ 2.3mm / 0.04 ~ 0.09in
ASA-3000MA	ASA-3000MSA	0.5 ~ 5.0	0.43 ~ 4.3	APS-301B AM-65	400-600 700-1000	1.0 ~ 2.6mm / 0.04 ~ 0.10in	1.0 ~ 2.3mm / 0.04 ~ 0.09in
ASA-4000M	ASA-4000MS	1.0 ~ 6.0	0.87 ~ 5.2	APS-301B AM-65	400-600 700-1000	1.4 ~ 2.6mm / 0.06 ~ 0.10in	1.4 ~ 2.3mm / 0.06 ~ 0.09in
ASA-4000MA	ASA-4000MSA	1.0 ~ 6.0	0.87 ~ 5.2	APS-301B AM-65	400-600 700-1000	1.4 ~ 2.6mm / 0.06 ~ 0.10in	1.4 ~ 2.3mm / 0.06 ~ 0.09in

適用電源控制器 Available controller

外觀 Outline	機種名 Model No.	工作電壓(AC) Operating vol.	輸出電壓(DC) Output vol.	體積(mm) Dimension	重量(g) Weight	可操作起子數 Drivable	安規認可 Approval by
	APS-201B	100 ~ 240V	9 ~ 19V 可調式 (Adjustable)	164X64X42	300	1 screwdriver	CB,CE, UL(CUL), ROHS,REACH
	APS-301B 軟式啟動 (Soft start)	100 ~ 240V	20 ~ 30V 可調式 (Adjustable)	164X64X42	300	1 screwdriver	CB,CE, UL(CUL), ROHS,REACH
	AM-55	100 ~ 240V	9 ~ 15V 可調式 (Adjustable)	172X84X61	450	1 screwdriver	CB,CE, UL(CUL), ROHS,REACH
	AM-65	100 ~ 240V	20 ~ 30V 可調式 (Adjustable)	172X84X61	450	1 screwdriver	CB,CE, UL(CUL), ROHS,REACH
	AP3 氣吸式 (For vacuum pick up type)	115V / 230V	24 ~ 30V 可調式 (Adjustable)	200X120X94	2998	1 screwdriver	—

槓桿式尺寸圖 Dimension



工作電壓 Power Source	30VDC 最大/MAX
扭力精度 Torque Accuracy	極精準 High precision
扭力調整 Torque Setting	無段式 Stepless
重量 Weight	迷你型 Mini type 187 / 290g, 標準型 Standard type 380 / 430g
長度 Length	迷你型 Mini type 158 / 198mm, 標準型 Standard type 208 / 242mm
握持直徑 Grip diameter	迷你型 Mini type 26mm, 標準型 Standard type 33.5mm
適用起子頭 (選購品) Available bit size (optional)	φ4, 6.35(1/4") 六角對邊 hex shank

輸出扭力曲線表 Torque Curve

